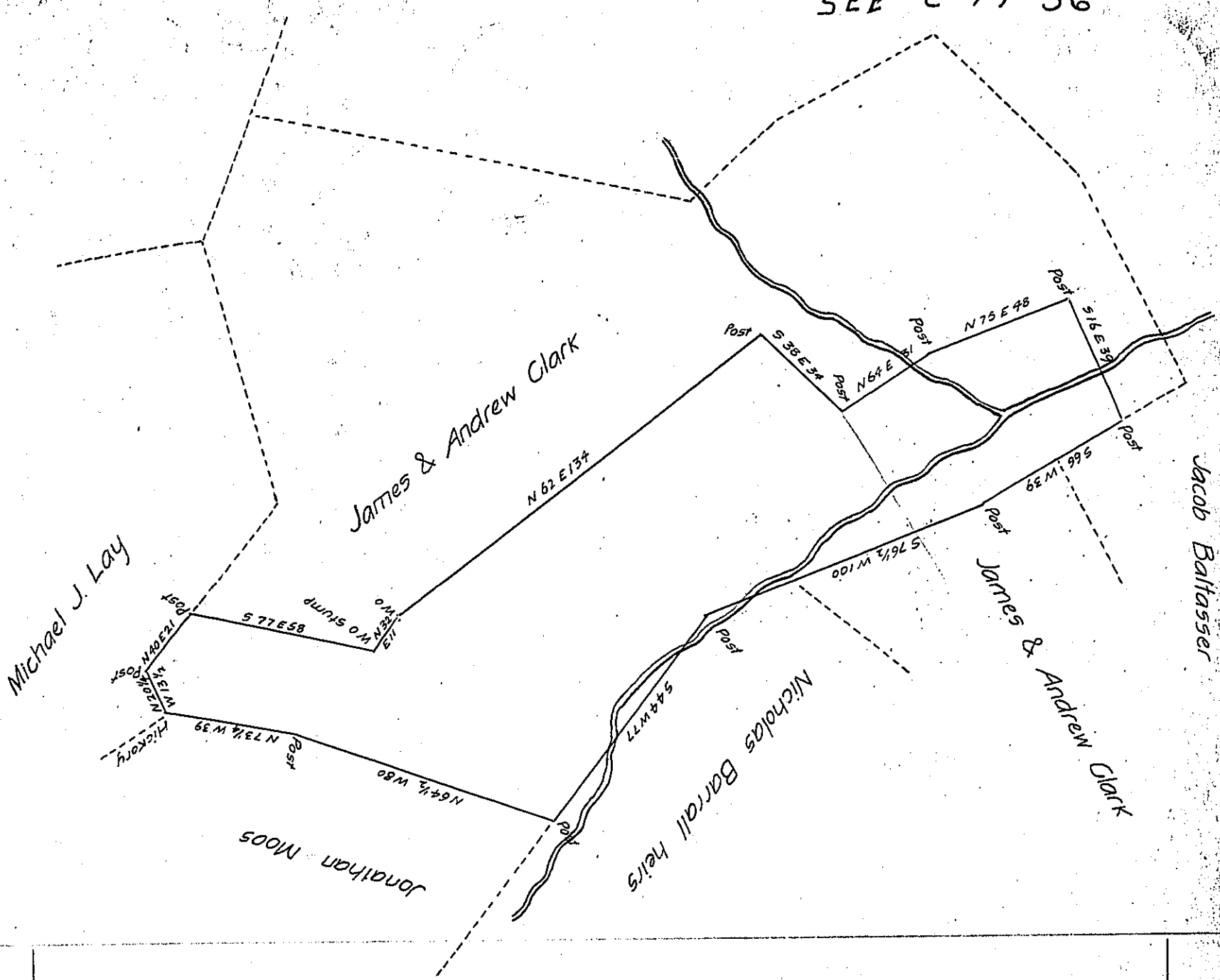


SEE - C-77-36



Draught of a tract of land Situate in Madison Township Perry County containing ninety three acres 99 perches and the Allowance of Six per cent for roads &c. being part of 242 1/2 acres Surveyed April 9th 1767 on an order of 300⁹⁵ to Thomas Clark dated September 9th 1766 N^o 1165 Surveyed the above September 26th 1853 for Patenting for James and Andrew Clark.

To J. Porter Brawley Esqr.
Surveyor General of Penn^a

James Woods C. S.

IN TESTIMONY that the above is a copy of the original remaining on file in the Department of Internal Affairs of Pennsylvania, made conformably to an Act of Assembly approved the 16th day of February, 1833, I have hereunto set my Hand and caused the Seal of said Department to be affixed at Harrisburg, this twenty-fifth day of July 1904

Luca R. Brown
Secretary of Internal Affairs.